

TROMBONE

HOUND DOG

(BACKGROUND HORN PARTS)

ARR. BY DAVID SHERE

♩ = 140

VERSE 1,2

VERSE 3,4

C⁷



5 F⁷

C⁷



9 G⁷

F⁷

C⁷



SOLOS

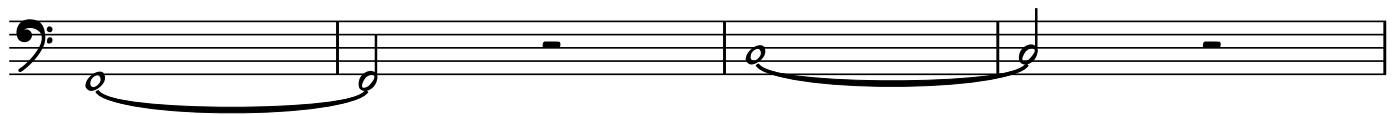
C⁷

13



17 F⁷

C⁷



21 G⁷

F⁷

C⁷



REPEAT BACK TO VERSE 3,4
AFTER 2ND SET OF SOLOS,
CONTINUE TO VERSE 5,6, END

25

F7

The bass line of 'The Rose Tree' is written on a single staff in bass clef. It consists of 16 measures. The melody is: G2 (quarter), A2 (quarter), B2 (quarter), A2-G2 (half), F2 (quarter), E2 (quarter), D2 (half), C2 (quarter), B1 (quarter), A1 (quarter), G1 (half), F1 (quarter), E1 (quarter), D1 (half), C1 (quarter), B0 (half). The notes are mostly on the lower part of the staff, with some ledger lines below the staff for the lower notes.

33 G^7

F7

The bass line of 'The Rose Tree' is written in 4/4 time. It consists of four measures. The first measure contains a quarter note G2, an eighth note A2, a quarter note B2, and an eighth note A2. The second measure contains a quarter note G2, an eighth note A2, a quarter note B2, and an eighth note A2. The third measure contains a quarter note G2, an eighth note A2, a quarter note B2, and an eighth note A2. The fourth measure contains a quarter note G2, an eighth note A2, a quarter note B2, and an eighth note A2. The piece ends with a double bar line and repeat dots.

37 G^7

Gb7

[illegible]

Musical notation for the bass line of 'The Rose Tree'. The key signature has one flat (B-flat). The melody consists of the following notes: G2, F2, E2, D2, C2, B1, A1, G1. The notes are written on a single staff with a bass clef.